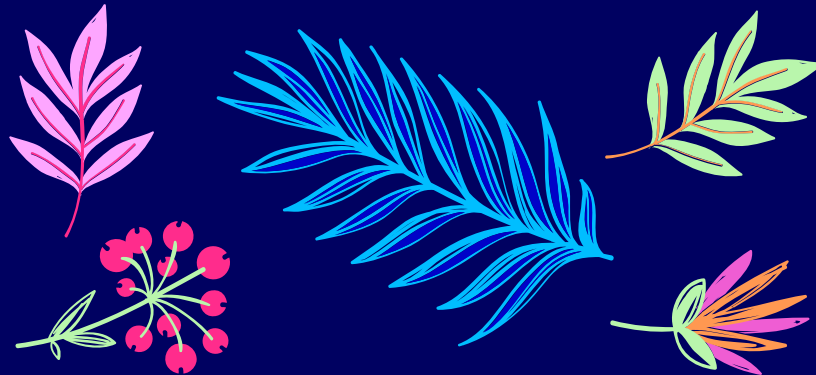




Summit Community Services Society: Women's Drop-In Therapy Group



• **Tuesdays** •
Starting September 19th

• **TIME** •
2:30 pm to 4 pm

• **PLACE** •
100 – 125 10th Ave S
In the downstairs conference room

Trauma-informed drop – in group therapy

This group is facilitated by two skilled clinicians and is a space to be supported by others who share similar lived experiences. If you have experienced intimate partner violence, sexualized assault and/or historical abuse and want a place to talk about it, you are invited to join. For more information call 250-489-3114 ex 236.